



# U.S. Department of Education Organizational Charts

Version Date – March 11, 2025

Office of the Secretary  
(OS)

Secretary  
Denise Carter (A)

Chief of Staff  
Rachel Oglesby

Senior Advisor  
VACANT

White House  
Initiatives

Deputy Chief of Staff for  
Operations  
Chase Forrester

White House Liaison  
Stephen Warzoha

Deputy Chief of Staff for  
Policy & Programs  
Jonathan Pidluzny

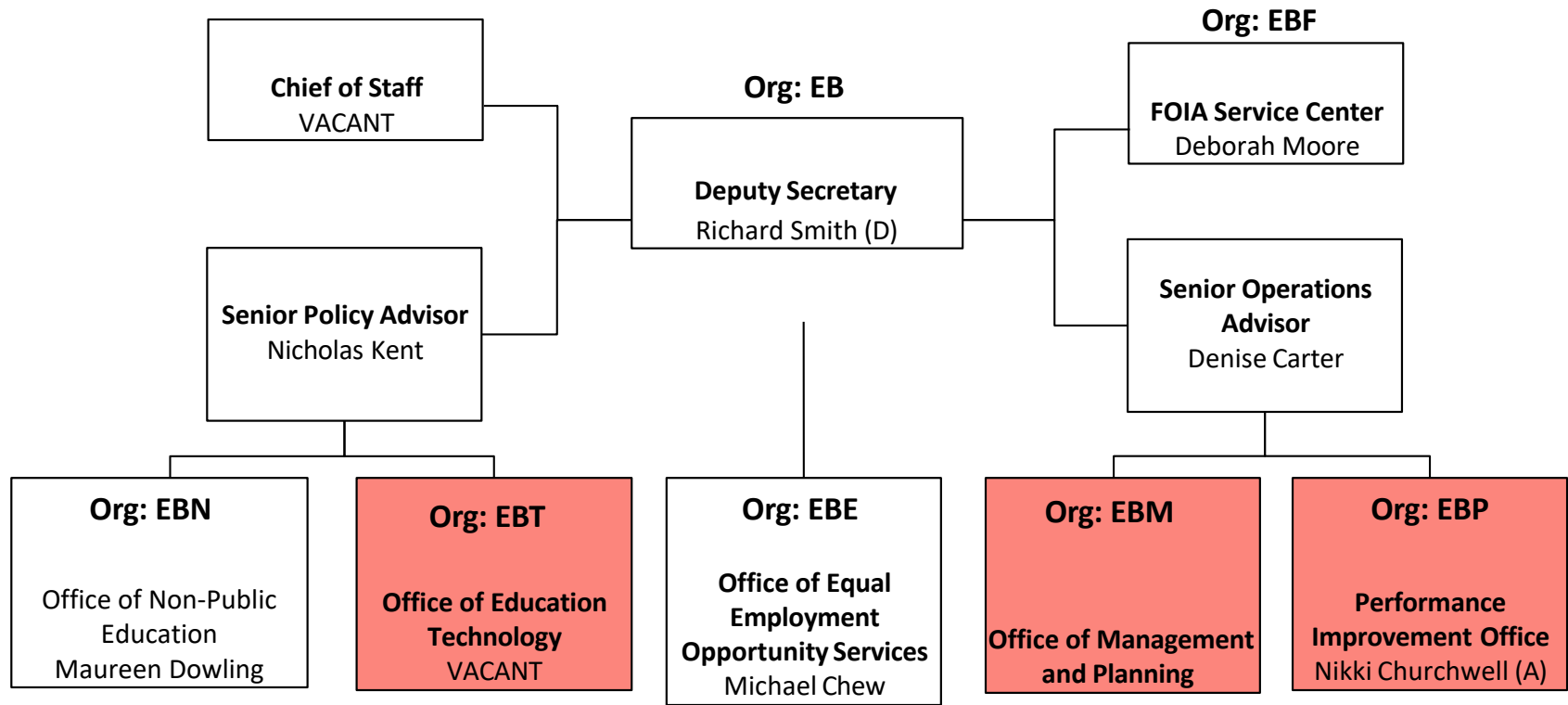
Org: EAS  
Executive  
Secretariat  
Tracey St. Pierre

Director  
International Affairs  
Office  
Rafael Nevarez (A)

Org: EASO – Operations Team



Office of the Deputy Secretary  
(ODS)

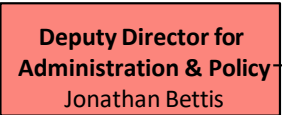




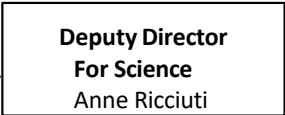
Org: ER



Org: ERB



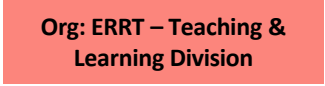
Org: ERA



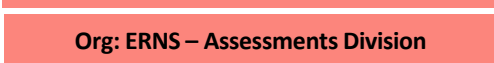
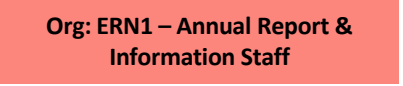
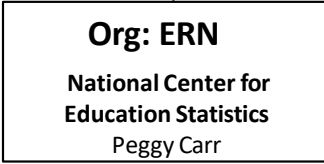
Org: ERD



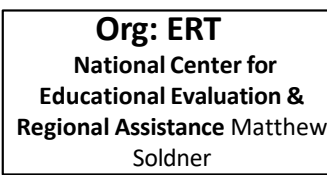
Org: ERR



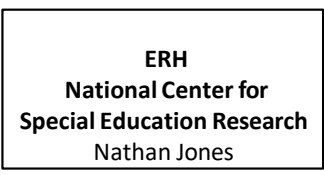
Org: ERN



Org: ERT



ERH



Office for Civil Rights (OCR)

Office for Civil Rights (OCR)

Assistant Secretary  
&  
Deputy Assistant Secretary for Policy  
EC

Deputy Assistant Secretary for  
Strategic Operations and Outreach  
ECO

Deputy Assistant Secretary for  
Enforcement  
ECD

Deputy Assistant Secretary for  
Management and Planning  
ECR

Deputy Assistant Secretary for Legal  
Affairs  
ECL

Seattle  
Office  
ECDX

San Francisco  
Office  
ECD9

Denver  
Office  
ECD8

Kansas City  
Office  
ECD7

Dallas  
Office  
ECD6

Chicago / Cleveland  
Office  
ECD5

Atlanta  
Office  
ECD4

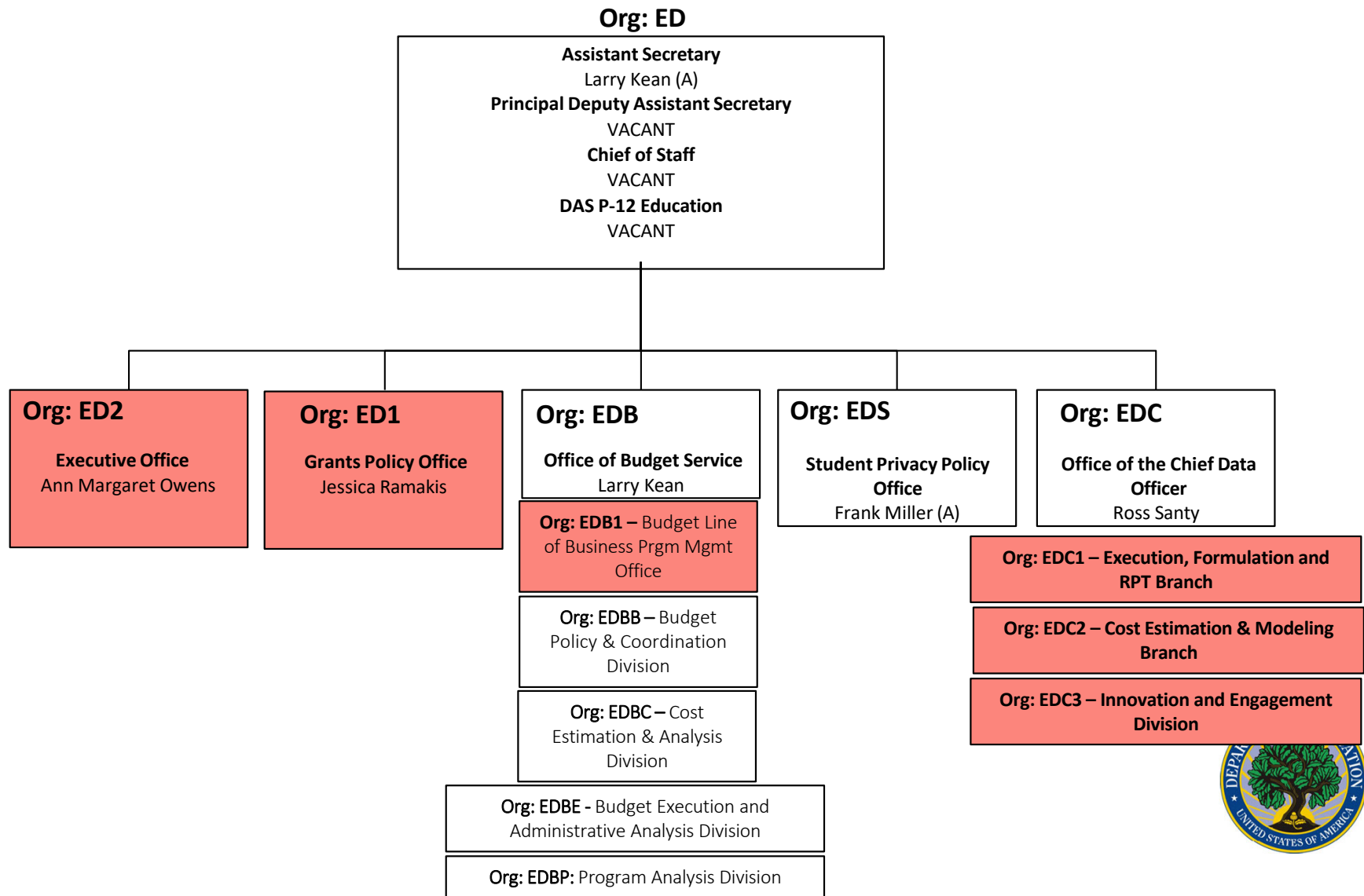
DC  
Office  
ECW

Philly  
Office  
ECD3

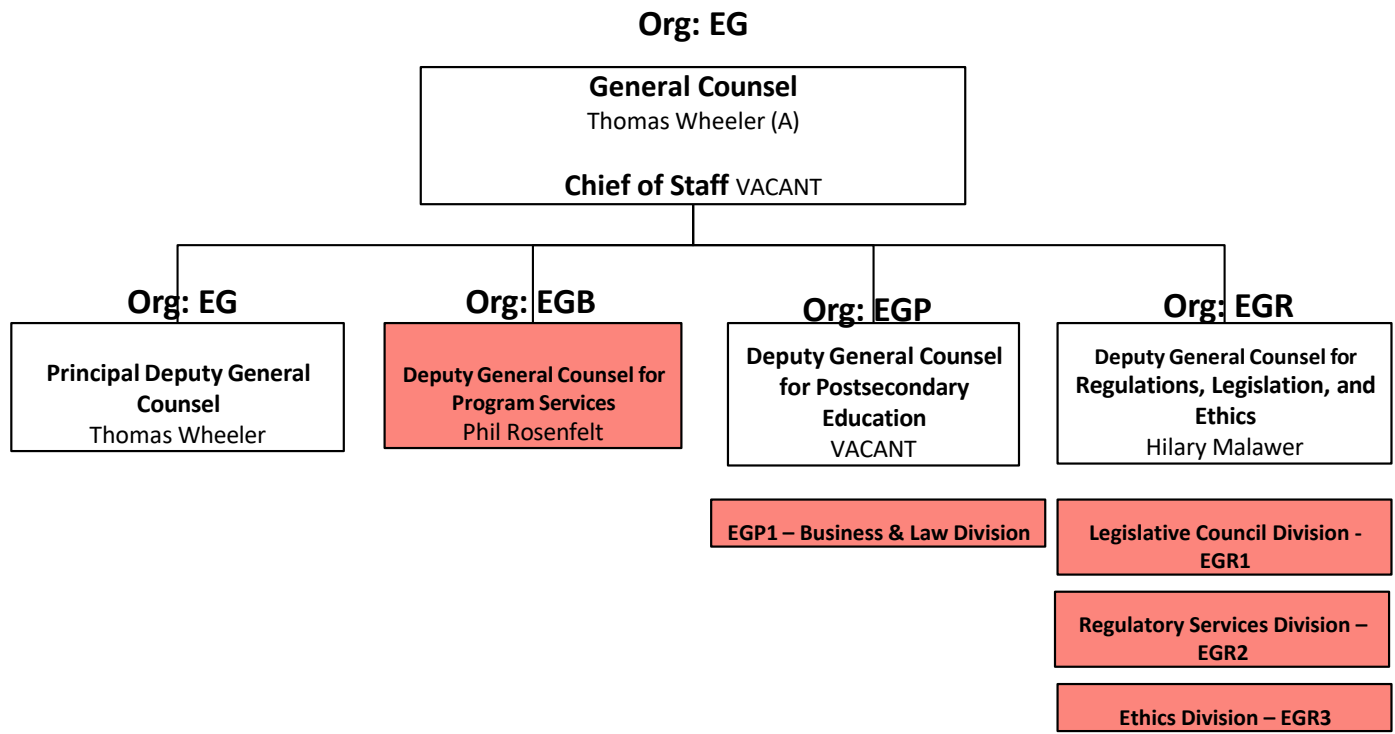
NYC  
Office  
ECD2

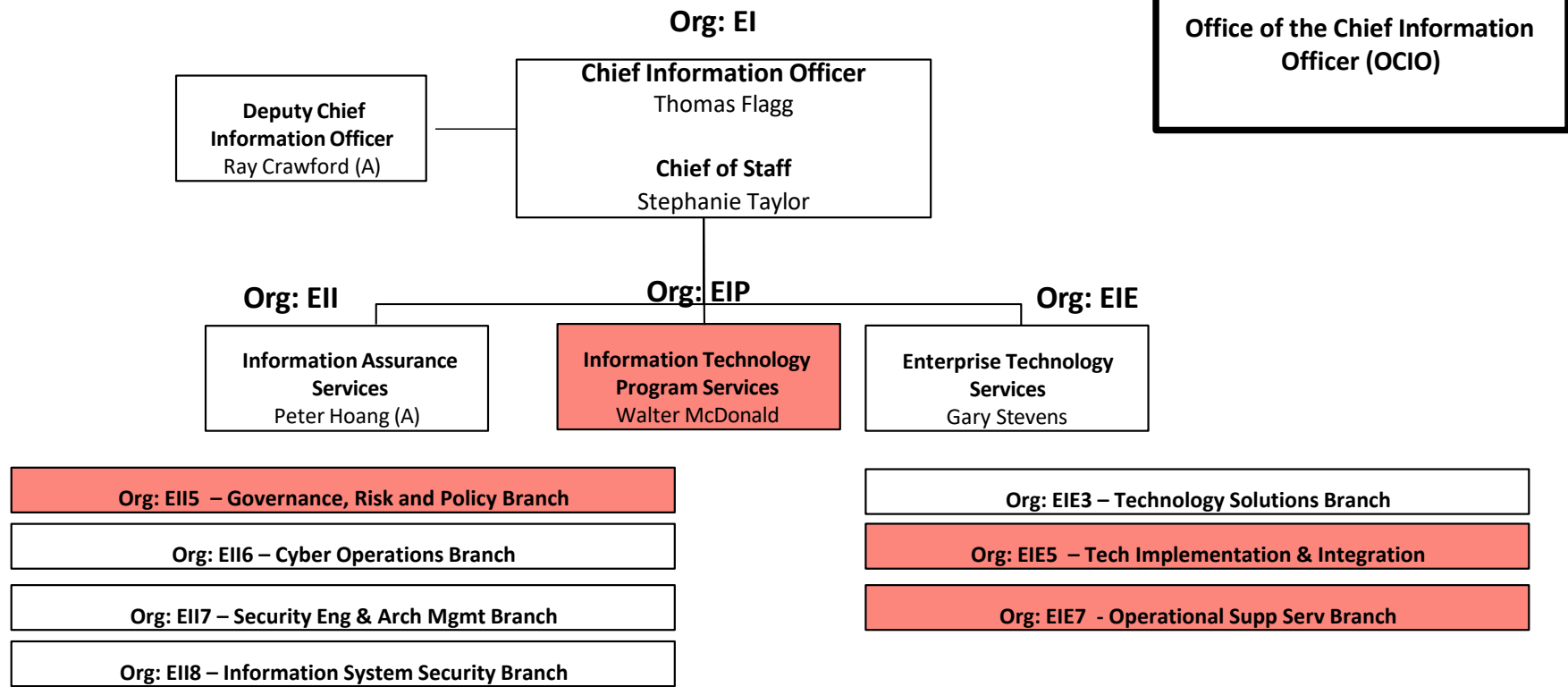
Boston  
Office  
ECD1

**Office of Planning, Evaluation and Policy Development (OPEPD)**

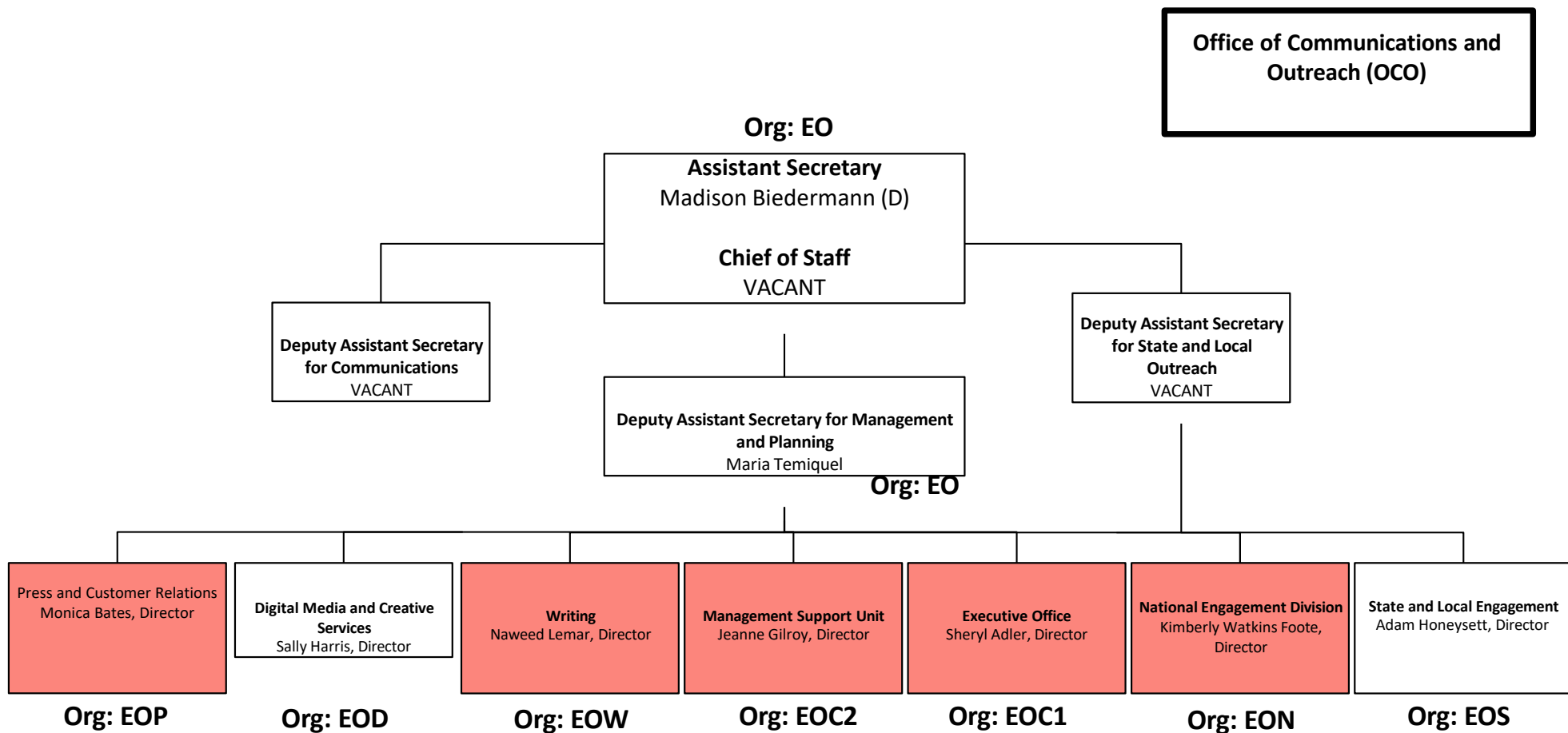


Office of the General Counsel (OGC)



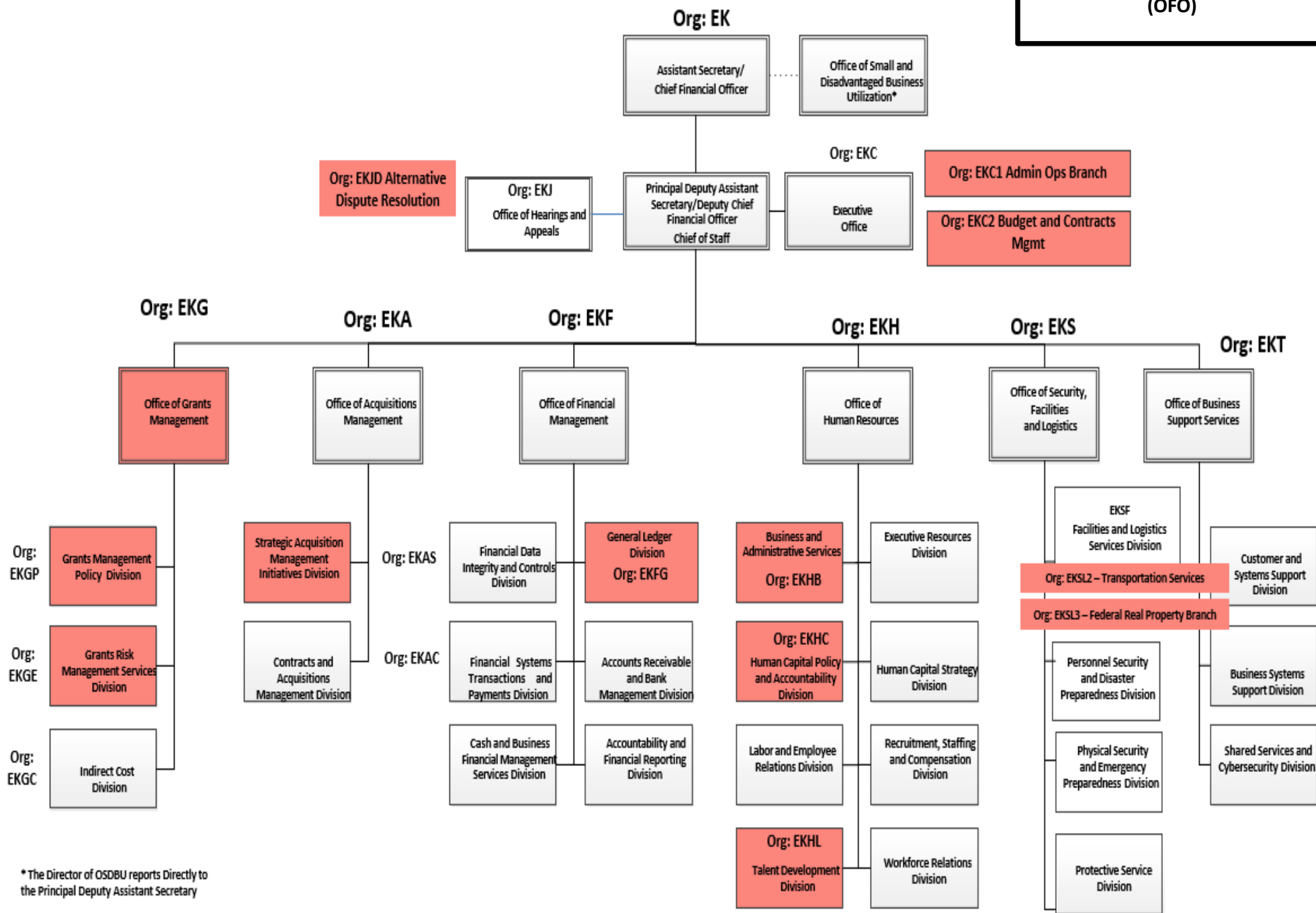






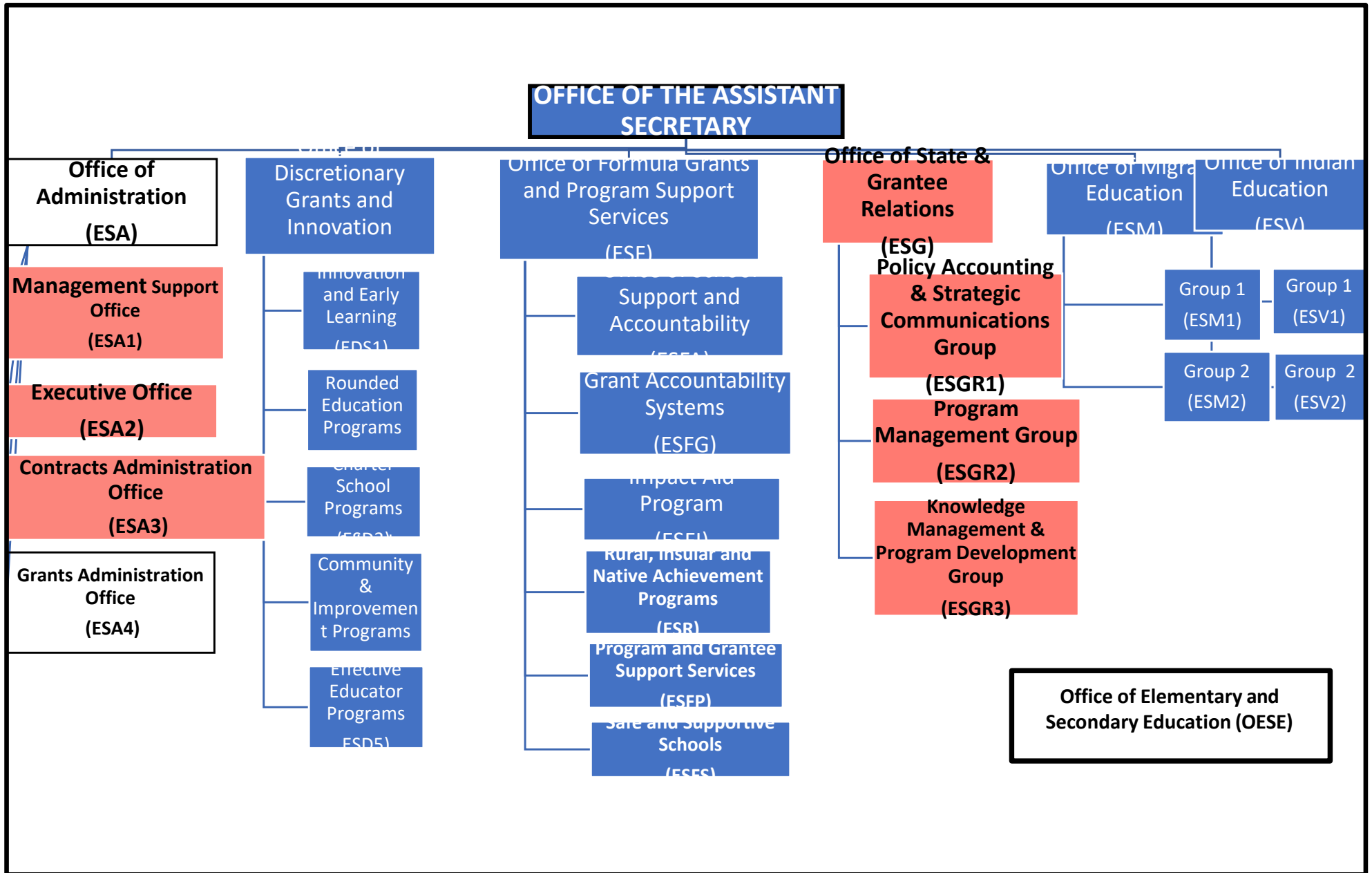
# Office of Finance and Operations (OFO) Org Chart - November 3rd, 2024

**Office of Finance and Operations  
(OFO)**

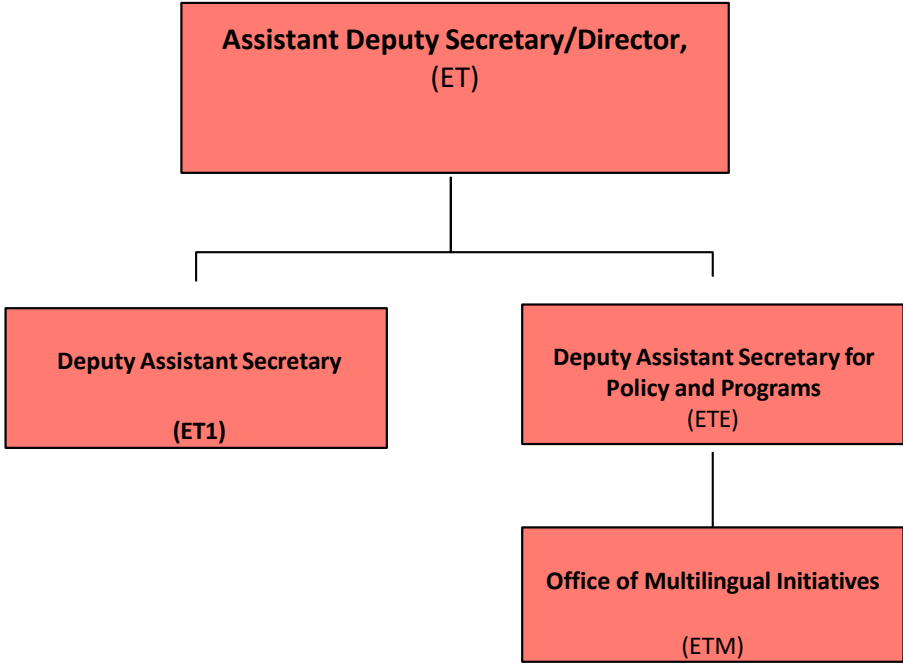


\* The Director of OSDBU reports Directly to the Principal Deputy Assistant Secretary

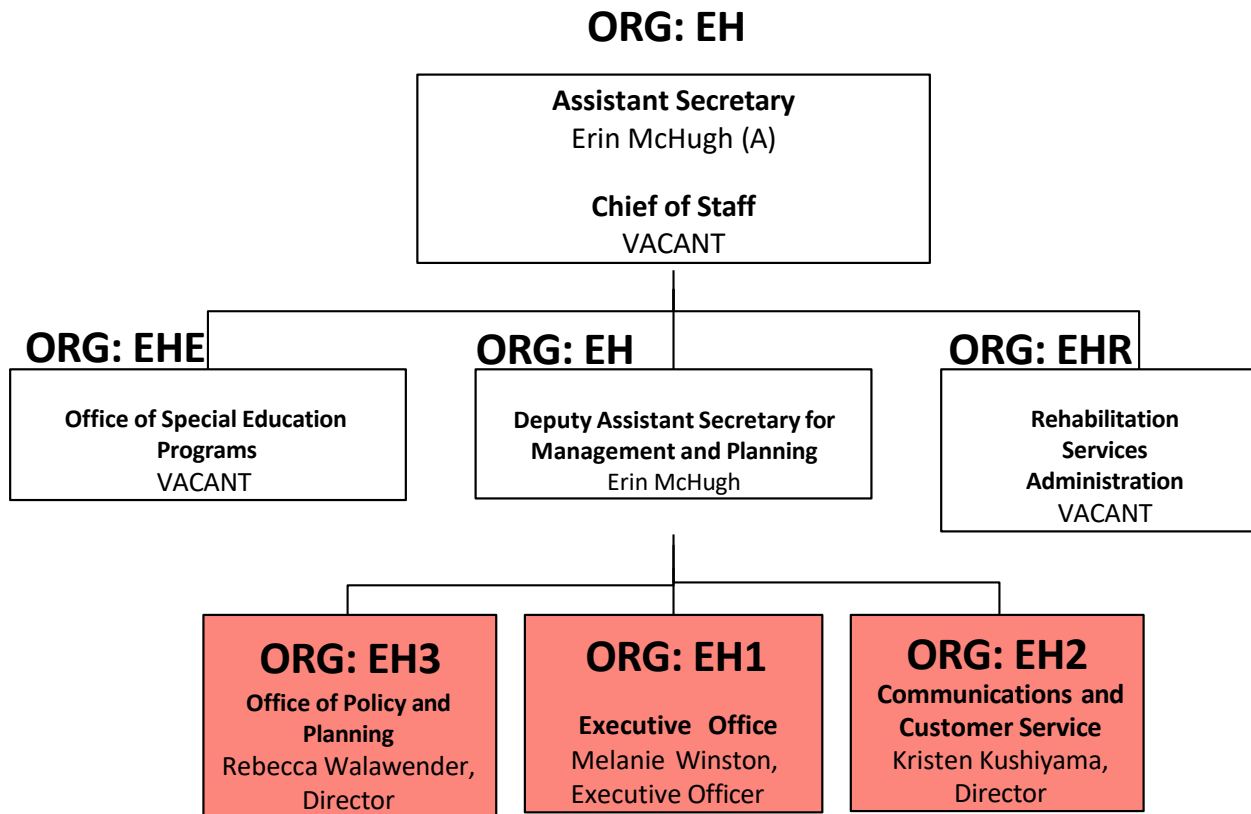
# OFFICE OF ELEMENTARY AND SECONDARY EDUCATION



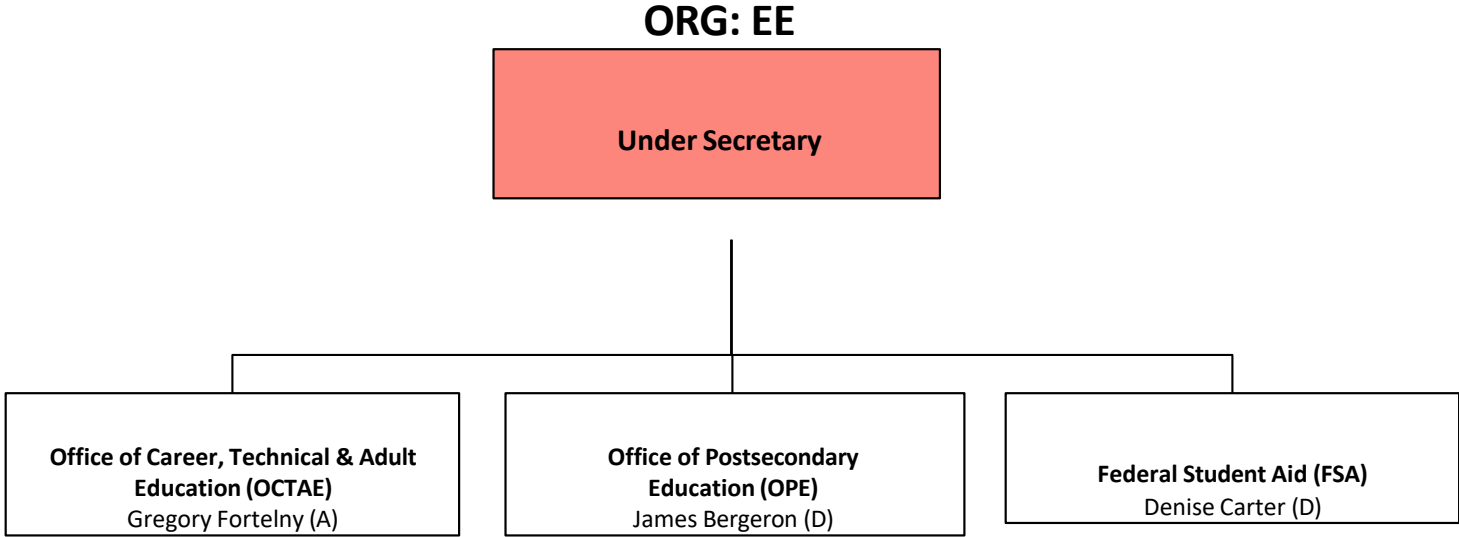
Office of English Language Acquisition (OELA)



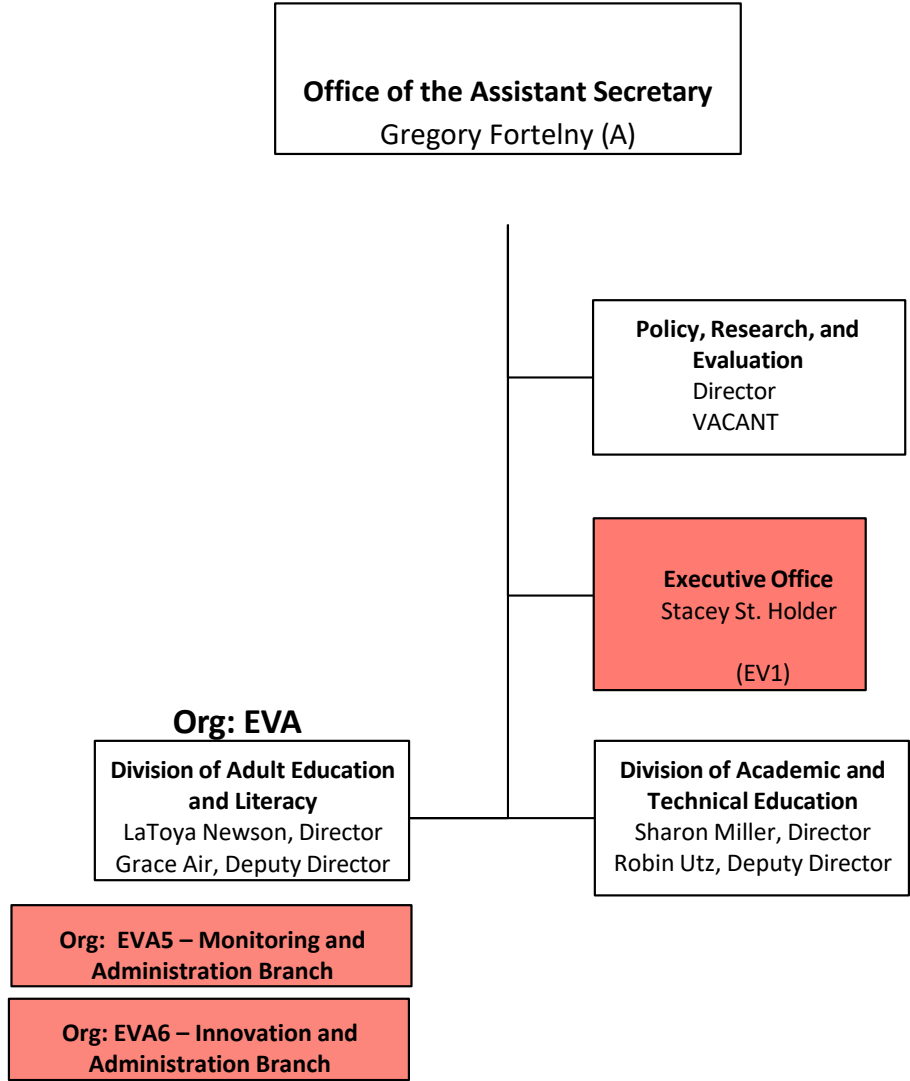
Office of Special Education and  
Rehabilitative Services (OSERS)



Office of the Under Secretary (OUS)



Office of Career, Technical, and Adult Education (OCTAE)



Office of Postsecondary Education (OPE)

Office of Postsecondary Education (EP)  
James Bergeron (D)\*  
\*Delegated the Authority to Perform the Functions and Duties of the Assistant Secretary  
Chief of Staff (vacant)

Management & Planning (EP)  
Deputy Assistant Secretary  
Tiwanda Burse

Executive Office (EP1)  
Executive Officer  
LaKisha Reid

Management Support Unit (EP2)  
Director (vacant)

Policy, Planning & Innovation (EPA)  
Deputy Assistant Secretary  
Victor Shirley

International & Foreign Language Education (EPF)  
Deputy Assistant Secretary (vacant)

Higher Education Programs (EPH)  
Deputy Assistant Secretary  
Gaby Watts

Policy Development, Analysis & Accreditation Service (EPAE)  
Senior Director  
Scott Prince  
Administrative and Auxiliary Services  
Director - Valerie Lefor

International & Foreign Language Education (EPF)  
Senior Director  
Cheryl Gibbs

Institutional Service (EHP)  
Senior Director  
James Laws (Acting)

Student Service (EHS)  
Senior Director  
James Davis (Acting)

Policy Coordination Group (EPAE1)  
Director  
Tamy Abernathy

Advanced Training & Research Group (EPFR)  
Director  
Sarah Beaton

International Studies Group (EPFS)  
Director  
Gary Lima

Institutional Group A (EHP1)  
Director  
James Laws

Student Group A (EHS1)  
Director  
Sharon Easterling

Policy Development Group (EPAE2)  
Director (vacant)

Institutional Group B (EHP2)  
Director (vacant)

Student Group B (EHS2)  
Director  
James Davis

Accreditation Group (EPAE3)  
Director  
Elizabeth Daggett

Institutional Group C (EHP3)  
Director  
Stacey Slijepoevic

Student Group B (EHS2)  
Director  
ReShone Moore

Policy Analysis & Forecasting Group (EPAE4)  
Director (vacant)

Boards and Committees  
Jacob K. Javits Fellow Program Fellowship Board  
National Advisory Committee on Institutional Quality and Integrity- George Smith, Executive Director (reports directly to Senior Director of Policy Development, Analysis & Accreditation Service)  
National Committee on Foreign Medical Education and Accreditation- George Smith, Executive Director (reports directly to Senior Director of Policy Development, Analysis & Accreditation Service)  
Historically Black College and University Capital Financing Advisory Board- Donald Watson, Executive Director (reports directly to Senior Director of Institutional Service)  
National Board of the Fund for the Improvement of Postsecondary Education

Fund for the Improvement of Postsecondary Education (EHP4)  
Director (vacant)

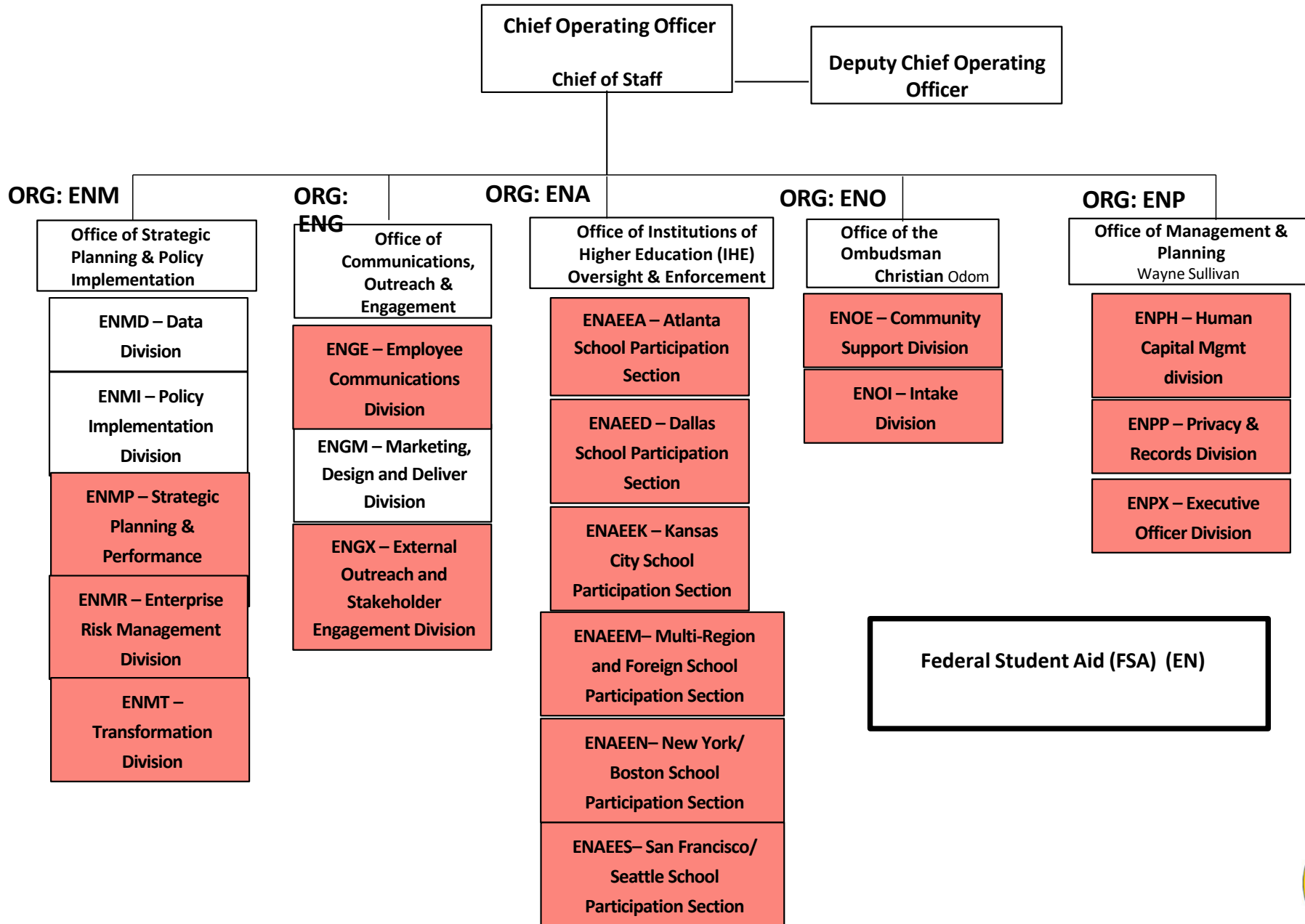
Student Group C (EHS3)  
Director (vacant)

Special Initiatives Group (EPAE5)  
Director (vacant)

Institutional Programs Development Group (EHP5)  
Director (vacant)

Student Programs Development Group (EHS4)  
Director  
Emory Morrison





Federal Student Aid (FSA) (EN)

Chief Operating Officer  
Chief of Staff

Deputy Chief Operating Officer

ORG: ENI

Chief Technology Office

ENIM – Product Management Division

ENIO – Technology Operations Division

ENIT – Technology Services Division

ORG: ENL

Office of Loan Portfolio Management

ENLP – Vendor Performance Division

ORG: ENF

Office of Student Aid Program Management

ORG: ENH

Office of Institutions of Higher Education (IHE) Program Management

ENHS – IHR Support Services Division

ORG: ENC

Office of Customer Contact Center Management

ENCI – Institution of Higher Education (IHR) Call Center Operations Division

ORG: ENJ

Office of Finance  
ENJB – Budget Division

ORG: ENS

Office of Strategic Acquisitions Planning

ENSA – Office of Strategic Acquisition Planning

ENSP – Acquisition Policy & Modernization Division

ENSR – Business Requirement Management Division

